



# GMT MONTHLY MEMBERSHIP PROGRESS REPORT

Results as of: 5/31/2019

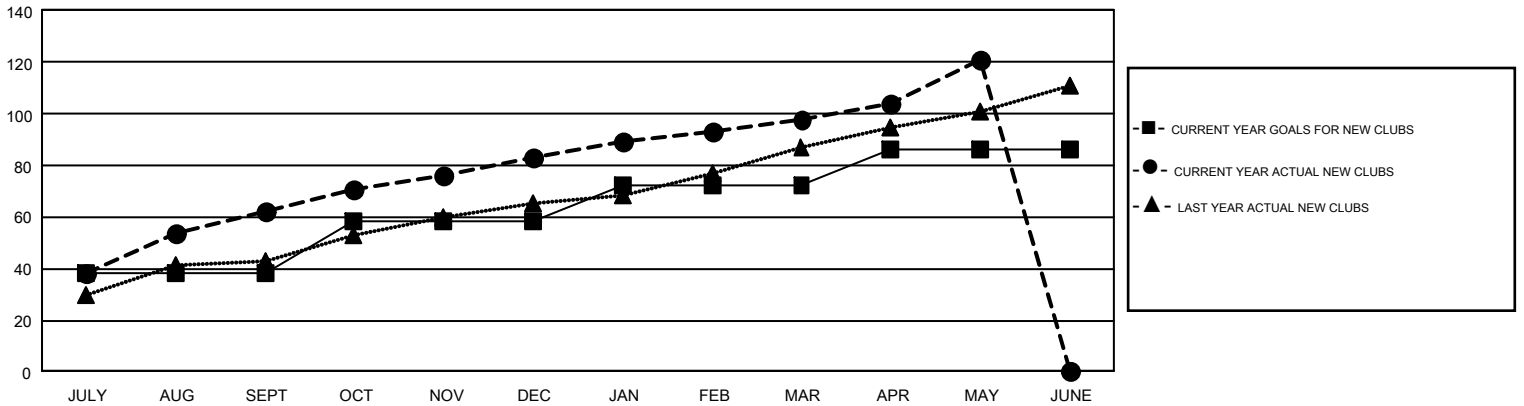
## GMT Constitutional Area 6, Group G

GMT: ANIL TULSYAN

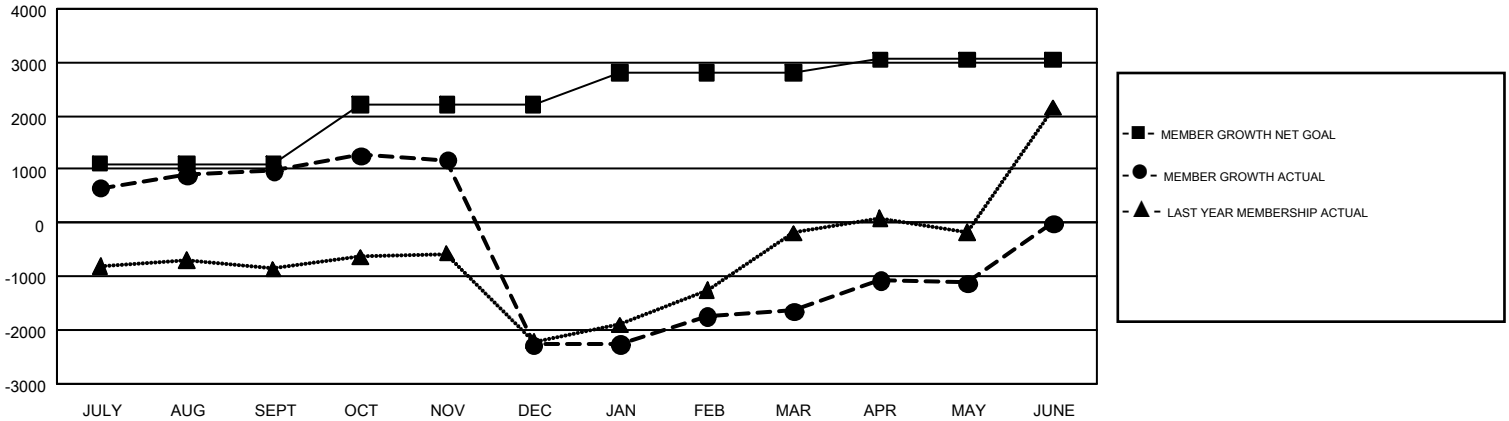
REPORT DOES NOT INCLUDE CLUBS IN UNDISTRICTED AREAS.

Clubs				Members			
RESULTS FOR 2018-2019				RESULTS FOR 2018-2019			
QUARTER	NEW CLUB GOAL	NEW CLUBS	DROPPED CLUBS	QUARTER	MEMBER GROWTH NET GOAL	MEMBER GROWTH ACTUAL	DROPPED MEMBERS ACTUAL (including transfers)
JULY/AUG/SEPT	38	62	4	JULY/AUG/SEPT	1,107	2,382	1,174
OCT/NOV/DEC	20	21	82	OCT/NOV/DEC	1,100	1,111	4,243
JAN/FEB/MAR	14	15	17	JAN/FEB/MAR	606	2,687	1,126
APR/MAY/JUNE	14	23	4	APR/MAY/JUNE	246	1,985	1,120

GOALS AND ACTUAL NEW CLUBS CUMULATIVE



GOALS AND ACTUAL MEMBERS CUMULATIVE



DROPPED CLUBS: 107	851 CLUBS OF 1,701 ADDED 1 OR MORE NEW MEMBERS	<b>GENDER DISTRIBUTION</b> MALE                    39,174 (69.86%) FEMALE                 16,901 (30.14%)
<b>DROPPED MEMBERS</b> DECEASED                    110 CLUB CANCELLED            2,799 OTHER                         4,752 <hr/> TOTAL                         7,661	<a href="#">CLICK HERE FOR CUMULATIVE MEMBERSHIP DATA</a>	TOTAL FAMILY UNIT MEMBERS                    26,083  FAMILY MEMBERS PAYING HALF DUES                    14,885